

CLAUDE

2024 GUILLAUME LOPEZ



DESIGN INSPIRATION

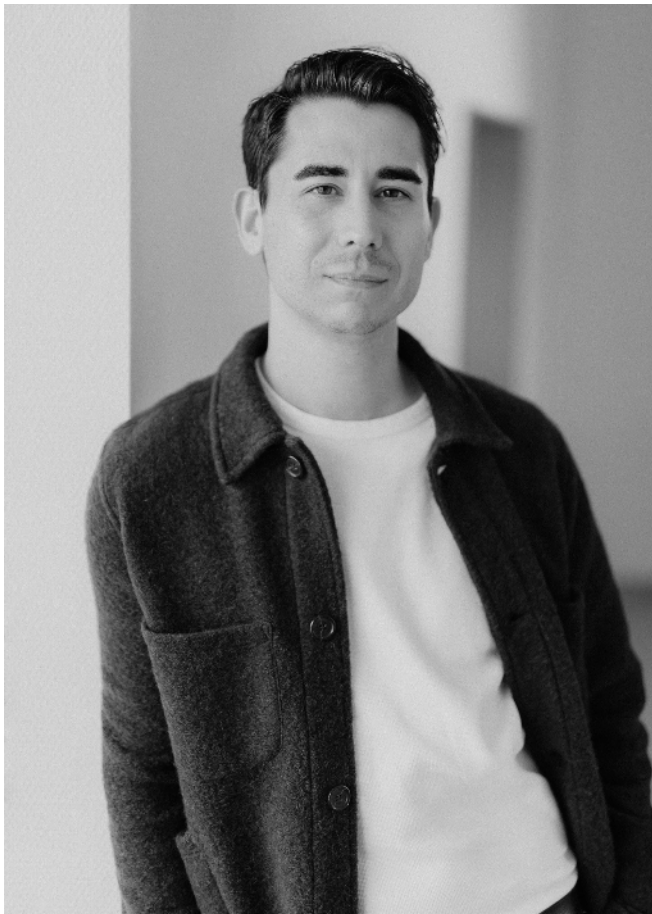
At some point during the 19th century, the ‘crapaud’ saw the light of day—a compact armchair, with a rounded back seamlessly gliding into lower armrests, providing a comfortable hug. Guillaume Lopez was inspired by its elegant silhouette, in a contemporary, sculptural interpretation: ‘Claude’, named after his grandfather. As an armchair—with a closed, oak-veneered base—‘Claude’ is the perfect addition to your seating area. Thanks to its open base front, the slightly higher version is the perfect dining or desk chair.

LINTELOO



DESIGNED BY GUILLAUME LOPEZ

Upon graduation—mentored by François Bauchet and Éric Jourdan at the Saint-Étienne School of Art and Design—Guillaume Lopez (1989) joined the leading brand of Christophe Delcourt. His passion for elegant, sophisticated finishes and a subtle colour palette subsequently brought the young designer to Toronto, where George Yabu and Glenn Pushelberg presented him with an opportunity to take his design talents to exclusive projects all over the world. In 2022, he struck out on his own and started his own studio in the French Alps. Guillaume is a strong believer in dialogue, in the broadest sense of the word—from the way in which shapes communicate with each other to merging past and present experiences, and combining state-of-the-art manufacturing techniques with natural materials. But above all, he believes in the power of collaboration, of shared passions. And with LINTELOO he shares the passion for great design.



SPECIFICATIONS

Body: Metal frame.

Seating: Polyurethane foam core in varying densities for optimal support and comfort, wrapped in a layer of hypoallergenic polyester fiber.

Leg: Oak veneer.

Upholstery: Composition of fabrics depends on the customer's choice of upholstery. Leathers are either aniline or pigmented/sealed.

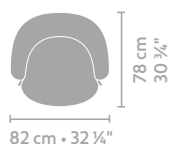
OPTIONS

Leg: 'White wash' (pigmented oil) or 'dark brown' stained, protected with a matte lacquer.

Upholstery: Fixed upholstery, available in all fabrics and leathers from the LINTELOO collection. Customers can opt to supply their own choice of upholstery fabric/leather. Please note: leather upholstery of a sofa requires more (visible) seams than fabric upholstery. For an impression of LINTELOO's fabrics and leathers, see 'Materials' at linteloo.com



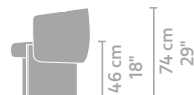
DIMENSIONS



armchair 82 x 78

metrage

3,96



dining chair 66 x 62

2,75

MAINTENANCE

All LINTELOO furniture has been made with lots of love and care. Of course, we want you to enjoy it, for as long as possible. Proper maintenance will prolong its lifespan, which is why each piece of LINTELOO furniture comes with a maintenance instruction booklet, also available for download at linteloo.com. Detailed information on care and cleaning, including the recommended products, can also be found at linteloo-care.nl.

Solid wood: Wood is a natural product, which may scratch, shrink and expand. Keep this to a minimum by using coasters, by not putting wooden furniture too close to a heat source, and by keeping your home at a 50-60% humidity level. Oil-treated woods benefit from regular nourishment. Varnished or painted woods can simply be wiped down with a damp cloth.

WARRANTY

All LINTELOO sofas and chairs are backed by a 10-year warranty on the frame. Cushions, upholstery and all other LINTELOO products are backed by a 3-year warranty, with a depreciation of 1/3 each year. Please make sure you keep your invoice or receipt. Excluded from the warranty are:

- Regular wear and tear, damages and discolouration of upholstery (fabric and/or leather).
- Creasing, colour and structure variations and other irregularities, which are part of the natural characteristics of fabrics, leather and/or wood.
- Complaints regarding fabrics and/or leathers which are not part of the standard LINTELOO collection (specially supplied fabrics and/or leathers).
- Damages caused by improper use, inadequate or incorrect maintenance, or repairs carried out outside the scope of LINTELOO's responsibility. LINTELOO uses the Terms and Conditions of the Centrale Bond van Meubelfabrikanten, available at www.linteloo.com.

If you have any questions, please contact your LINTELOO dealer or LINTELOO's customer service department.

